

ONE STOP SOLUTION



INFINI

Engineers & Contractors



info@infiniengineers.com
infiniengineers@gmail.com



82752801875
9970062049



Office No.1, Rasik apartment, Near Dashbhuja Ganpati Mandir, Paud Road, Erandwane, Pune - 411 004



ABOUT US

Infini Engineers & Contractors emerged as a young partnership firm in 2016 with a clear mission to offer cost-effective solutions while prioritizing environmental conservation. We take great pride in our deep technical expertise in the products we offer and are committed to guiding our customers throughout the entire process, ensuring their utmost satisfaction. Despite our relatively short time in the industry, we have achieved significant milestones by catering to renowned clients and fulfilling their construction requirements. Our portfolio encompasses a diverse range of top-quality construction practices, including **Drywall Partitions, High Rise Partitions, Fire Partitions, False Ceiling, Raised Flooring, Fire Doors, Louvers, PE Underground Drainage System, HPL Toilet Cubicles, Geofoam**, and more.

Infini Engineers & Contractors has rapidly carved out a niche in the market, built on the foundations of dedication and trust. We have established strong relationships with leading professionals such as Architects, Consultants, Interior designers, industrial Contractors, Builders, and direct customers. By providing them with contemporary building solutions, reliable materials, and prompt service, we have solidified our reputation in the industry.



Sanket Nanasaheb Nawale

*B.E Civil
PGP PEM - NICMAR, Pune*



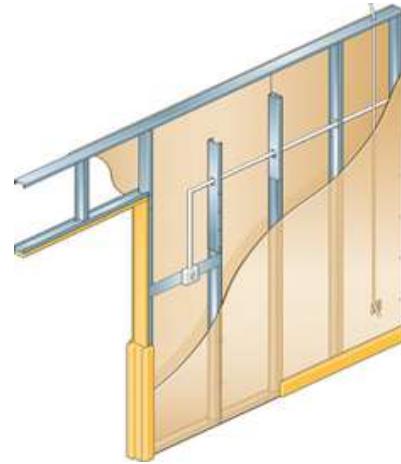
Rohit Anil Laddha

*B.E Civil
MBA PCM - MIT, Pune*



OUR SERVICES

Drywall Partitions: Drywall partition is a lightweight wall system made of different types of plaster boards. It's essential for creating flexible spaces, privacy, and noise control in buildings. Used widely in offices, homes, and commercial settings for easy, cost-effective room division and customization.



Sandwich panel Partitions: Sandwich panel partitions are composite structures made of two outer layers and a core material. They're used for efficient space division in buildings, providing insulation, soundproofing, and fire resistance. Ideal for creating adaptable and well-insulated spaces.

Sliding Folding Partitions: Sliding folding partitions are versatile space dividers that can expand or contract to create flexible layouts. They fulfill the need for adaptable room arrangements in offices, hotels, homes, and event spaces. These partitions optimize space utilization while offering privacy and functionality.





OUR SERVICES

Ceiling: A Industrial ceiling is a suspended secondary ceiling installed below the main structural ceiling. It conceals wiring, improves aesthetics, offers insulation, soundproofing, and enhances lighting. It's essential in modern architecture for practical and visual benefits.



Fire Doors: Fire doors are specialized doors designed to prevent the spread of fire and smoke in buildings. They are crucial for containing fires, protecting occupants, and aiding evacuation. Fire doors are constructed with fire-resistant materials and equipped with self-closing mechanisms, seals, and proper labeling to ensure safety during emergencies.

Raise Floor System: A raised flooring system is an elevated platform above a structural floor, creating a space for utilities like cables, wires, and HVAC systems. It enhances flexibility, simplifies maintenance, and optimizes space in offices, data centers, and tech environments.





OUR SERVICES

Toilet Cubicles: High-pressure laminate toilet cubicles are a popular choice due to their robustness and resistance to moisture, scratches, and impact. They are a sleek and stylish in appearance while providing durability and easy maintenance, making them ideal for high-traffic washroom environments.



Cleanroom: A cleanroom is a controlled environment with low levels of airborne particles and contaminants. It's essential for industries like semiconductor manufacturing, pharmaceuticals, and biotechnology to ensure product quality and research integrity. Cleanrooms prevent contamination, enabling precise processes and experiments.

PE Drainage System: PE Underground Drainage System employs polyethylene pipes for efficient wastewater removal. It's vital for proper sanitation, preventing waterlogging, and protecting the environment. Ideal for residential, commercial, and industrial setups.





OUR SERVICES

Epoxy/PU Flooring: Epoxy/PU flooring is a durable and versatile solution for industrial spaces. It consists of resin and hardeners that create a seamless, glossy surface. With its resistance to stains, chemicals, and heavy foot traffic, epoxy flooring is popular in garages, warehouses, hospitals, providing long-lasting beauty and protection.



Highspeed Shutters: Highspeed Shutters are self extinguishing PVC fabric make. High tensile & tear strength Mould & pest repellent UV resistant & weatherproof Outstanding isolating capabilities Temperature resistant & easy to clean Fabric thickness available in 900GSM & 1700GSM

Lightweight Slab: A lightweight slab is a construction element designed for reduced weight and enhanced structural efficiency. Typically composed of materials like decksheet, cement board or precast panels, it offers benefits such as improved insulation, ease of handling, and reduced load on supporting structures. Ideal for high-rise buildings, mezzanine floors. It enhances energy efficiency and construction speed.





WHY PREFER US

One thing you want when you decide to install or repair any service is that it will never put your safety at risk. What you also want is a company that offers a range of services without making compromises when it comes to quality. That's Infini Engineers and Contractors.

When you contact our company for any of our services, what you get is an experienced contractor and a specialized team. Our team is here to offer advice and arrange your services as per your convenience. When you ask the million-dollar question why choose our company, the answer is not limited to one.



Strong technical expertise

Customized solutions

Simplified Solutions To Complex Problems

Quality

Safety Comes First

On time delivery

Some of our clients...

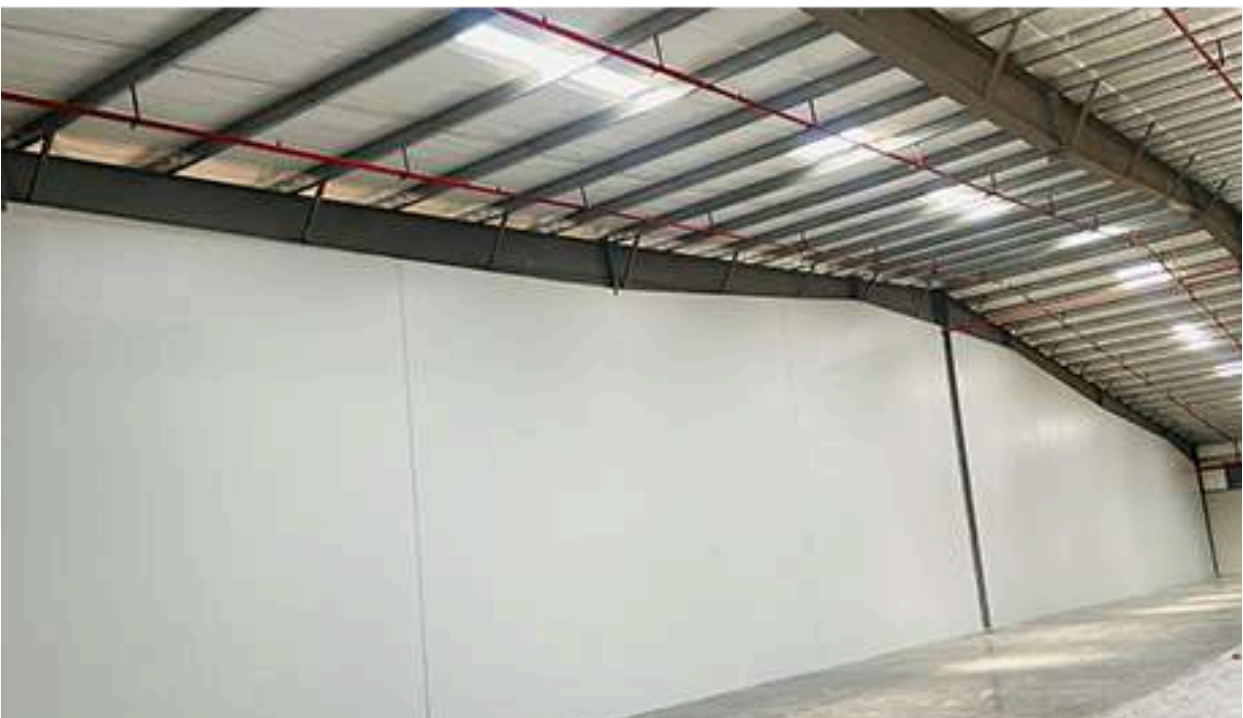
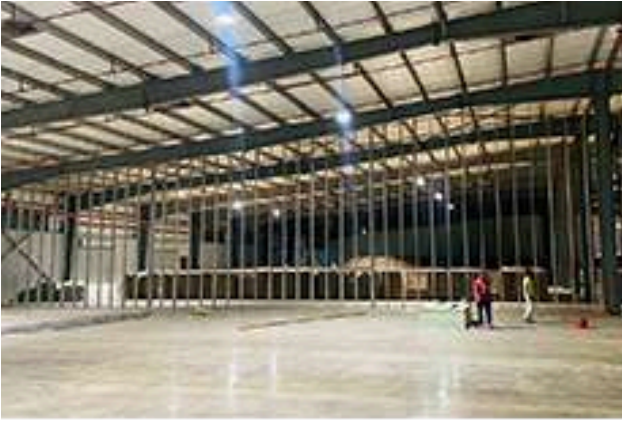




PROJECT GALLERY

INFINI ENGINEERS AND CONTRACTORS

Aarvee Cold Chain, Baramati (High Rise Drywall upto 12mtr high)





PROJECT GALLERY

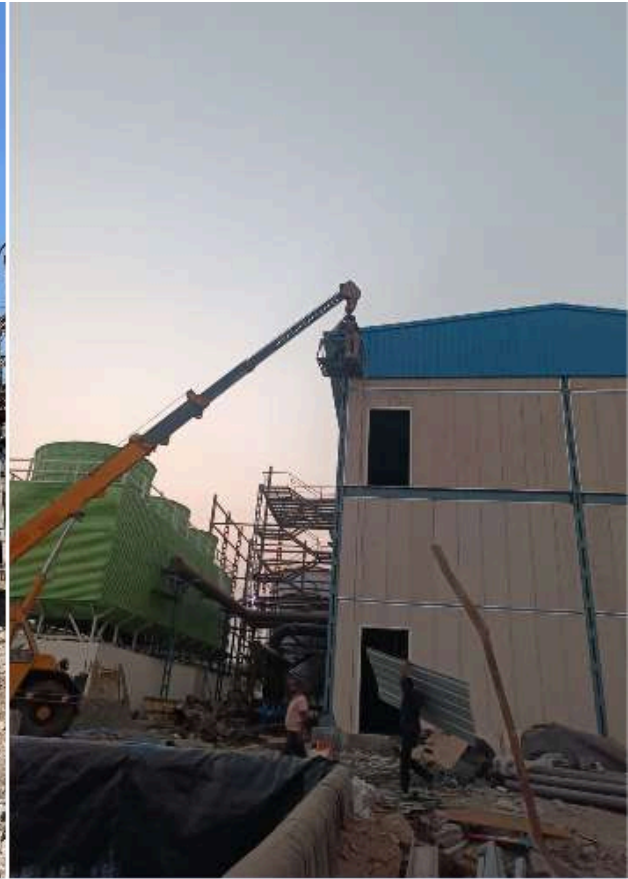
3M Ranjangaon, (Drywall Partition upto 13 mtr Ht)





PROJECT GALLERY

Baramati Agro (External Drywall upto 10 mtr ht)



INFINI ENGINEERS AND CONTRACTORS



PROJECT GALLERY

SPA at Oxford Golf Resort, Pune (Drywall Partition)





PROJECT GALLERY

Rieter India, Shirwal Pune (EPS Panel)





PROJECT GALLERY

Deccan Fine Chemicals Pvt Ltd, Goa (Cleanroom)





PROJECT GALLERY

Deccan Fine Chemicals Pvt Ltd, Goa (Cleanroom)

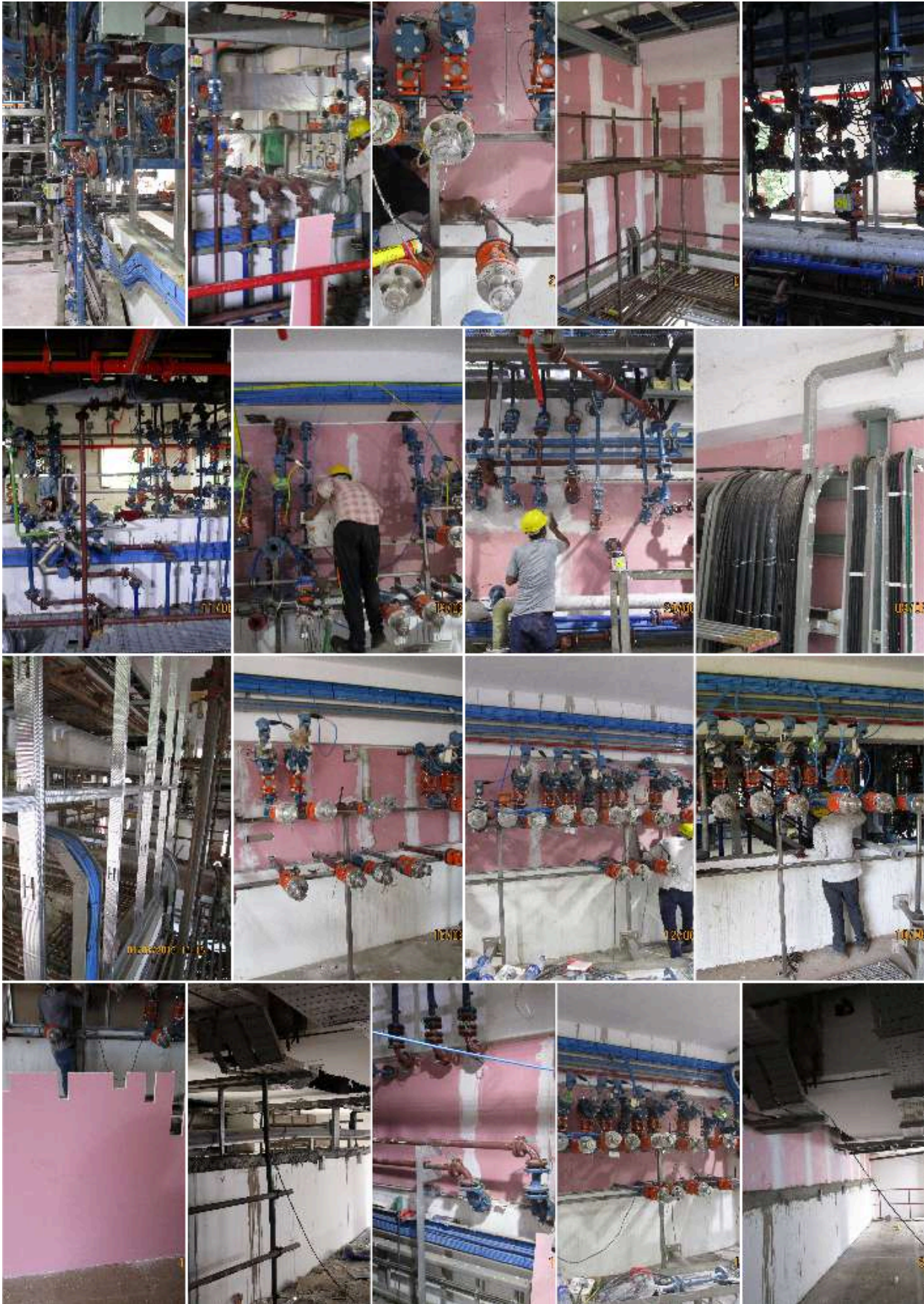


INFINI ENGINEERS AND CONTRACTORS



PROJECT GALLERY

Deccan Fine Chemicals India Pvt Ltd, Goa (2 hrs Firewall)



INFINI ENGINEERS AND CONTRACTORS



PROJECT GALLERY

Deccan Fine Chemical, Goa (Drywall Partition)

INFINI ENGINEERS AND CONTRACTORS





PROJECT GALLERY

Clean Science and Technology Pvt Ltd, Kurkumbh
(Sandwich Panel Partition)



INFINI ENGINEERS AND CONTRACTORS



PROJECT GALLERY

Server Room, Baner Pune (2 hr Fire Partition Wall)





PROJECT GALLERY

Smith and Mould (Drywall Self Standing Enclosure)





PROJECT GALLERY

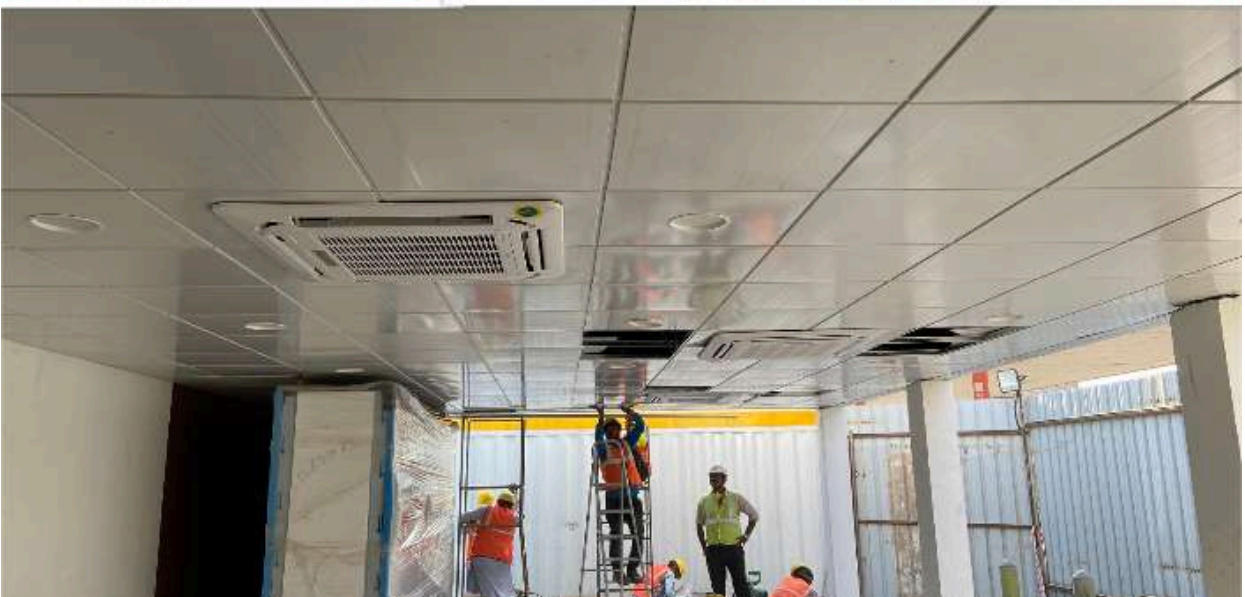
Fire Doors





PROJECT GALLERY

Shell India Pvt Ltd, Pune (Metal Ceiling)

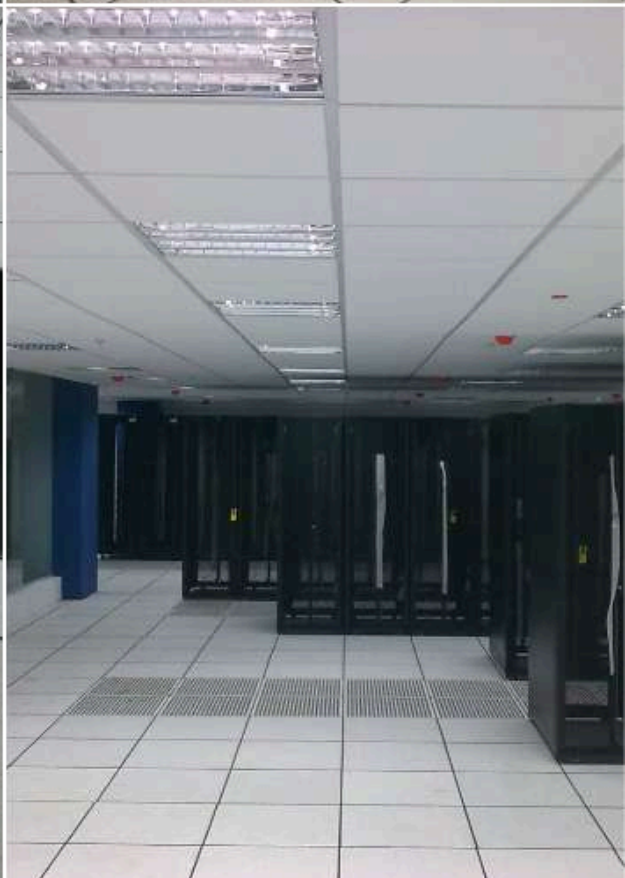


INFINI ENGINEERS AND CONTRACTORS



PROJECT GALLERY

Deccan Fine Chemicals India Pvt Ltd, Goa (Raised Flooring)





PROJECT GALLERY

P. Jog High School, Pune (Sandwich Panel Partition)



Awesome 6:51 pm

thank you 6:51 pm

and very happy with your work and service 6:51 pm

will 100% do something bigger together soon 6:52 pm

and very happy with your work and service

Thank you sir 7:09 pm ✓✓

will 100% do something bigger together soon

Very well looking forward to it.. 7:09 pm ✓✓



PROJECT GALLERY

Prabhat 9, Pune (Light Weight Slab)





PROJECT GALLERY

Coca Cola India Pvt Ltd, Pune (PE Manholes)

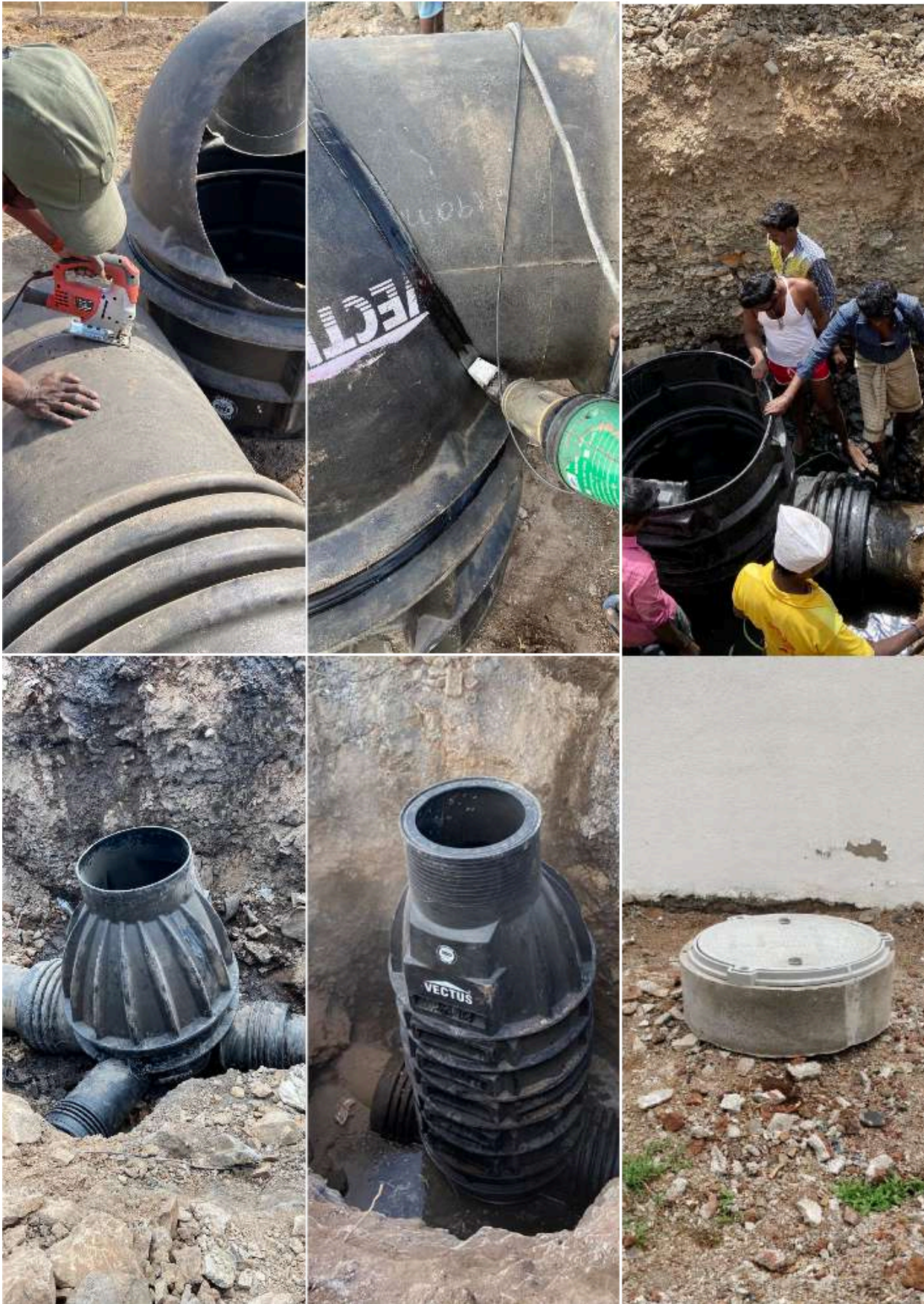
INFINI ENGINEERS AND CONTRACTORS





PROJECT GALLERY

MIDC Kurkumbh (PE Chambers)





PROJECT GALLERY

Rigved Apartments, Pune (PE Underground Water Tank)





PROJECT GALLERY

Shri Sai Baba Sansthan, Shirdi (Polycarbonate Roofing)

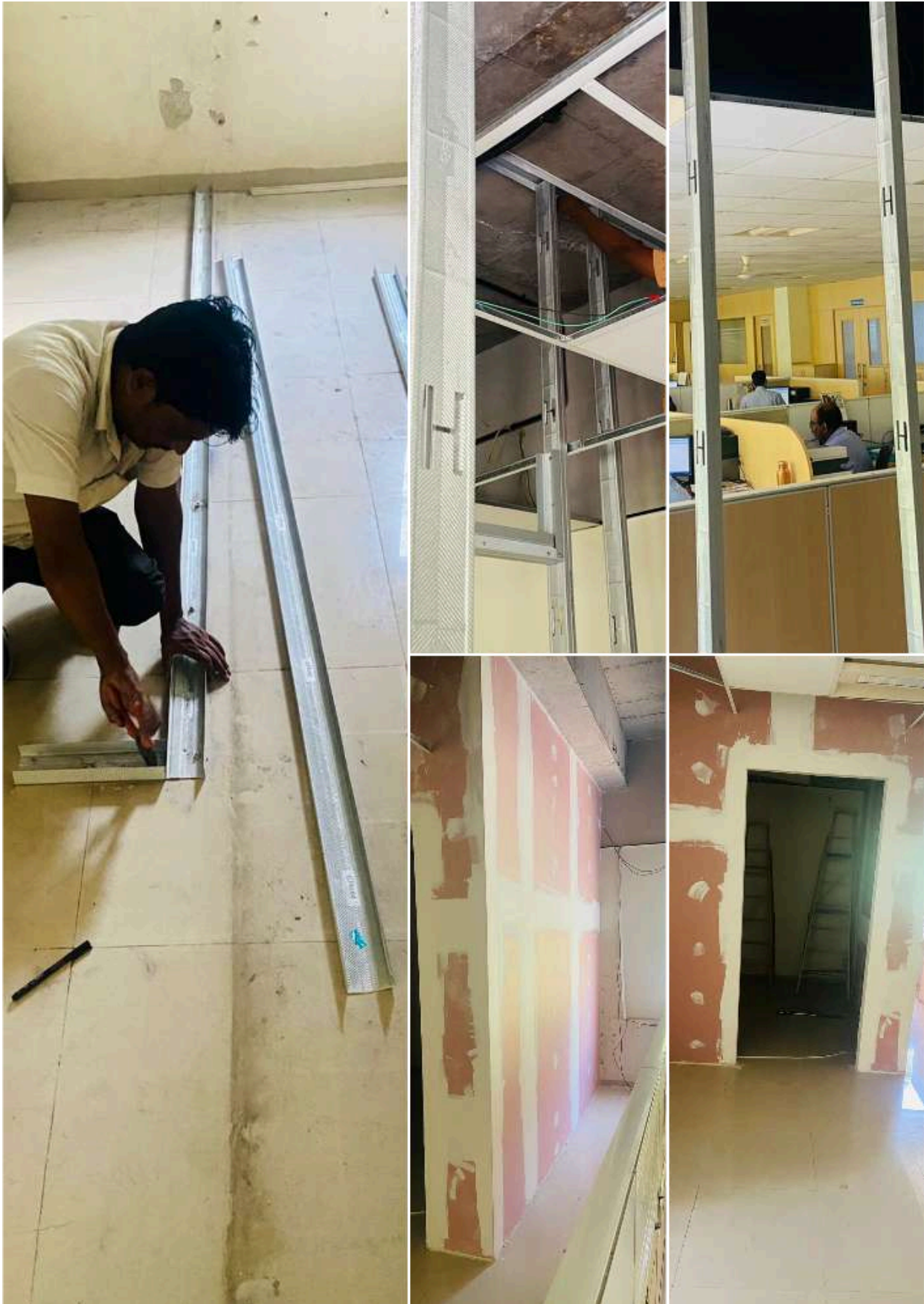
INFINI ENGINEERS AND CONTRACTORS





PROJECT GALLERY

Automobile Corp. of Goa Ltd (2 hr Firewall)



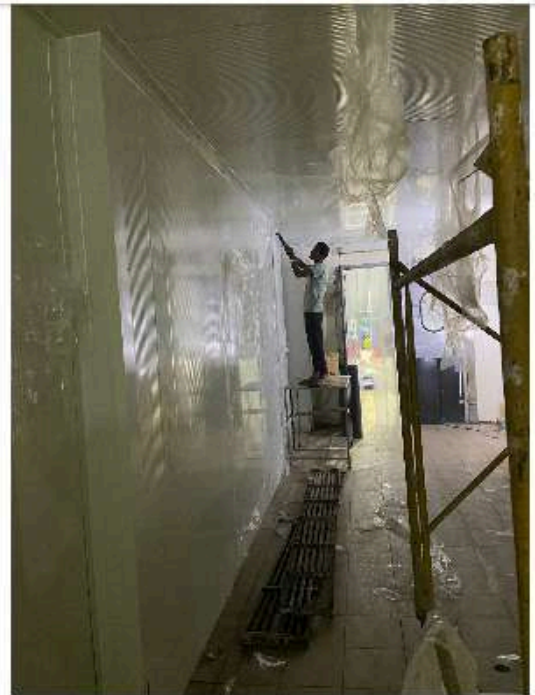
INFINI ENGINEERS AND CONTRACTORS



PROJECT GALLERY

Baramati Agro, Baramati (EPS Sandwich Panel)

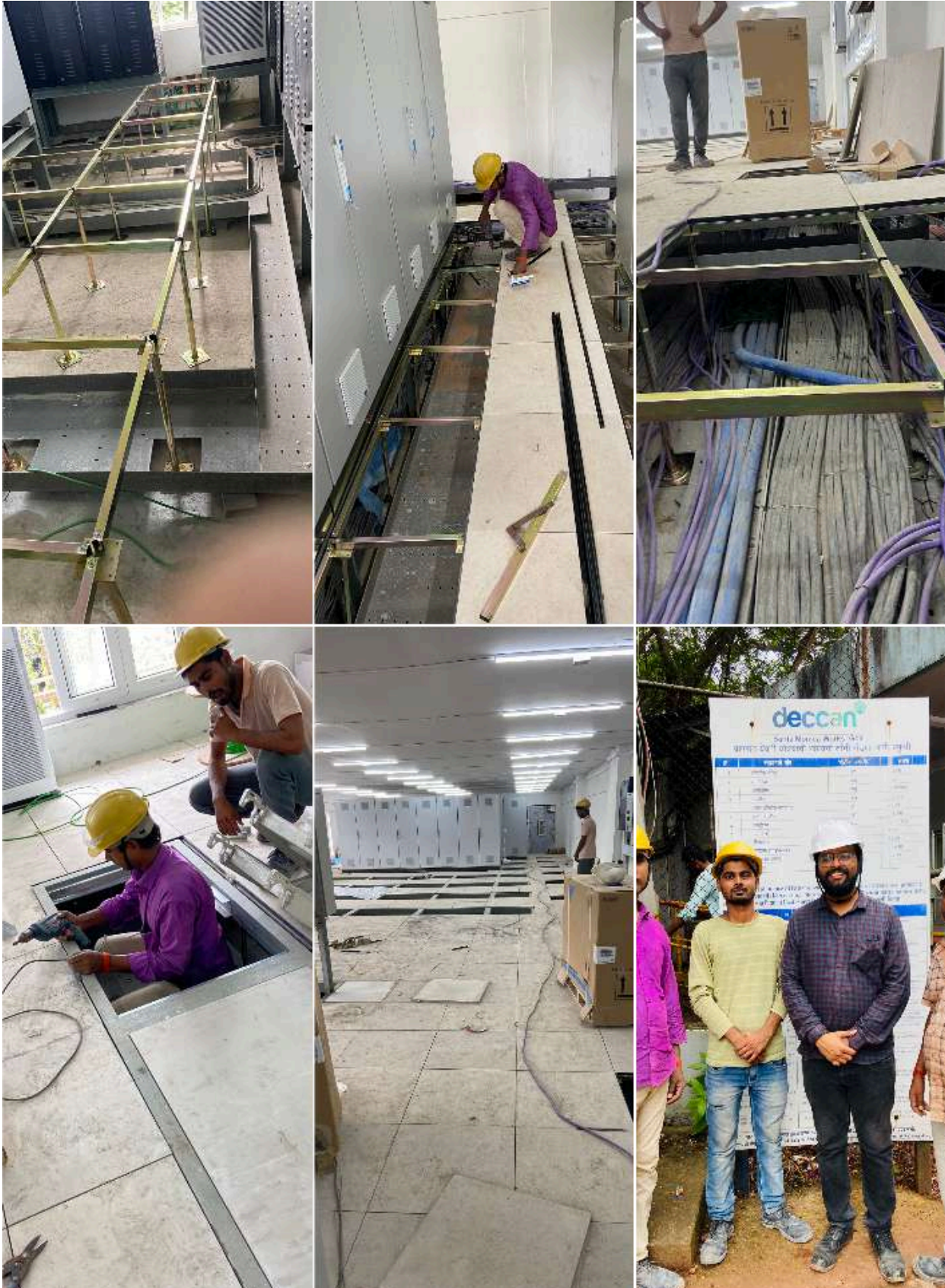
INFINI ENGINEERS AND CONTRACTORS





PROJECT GALLERY

Deccan Fine Chemicals, Goa
(Raised Flooring 18mm thk shera board)





PROJECT GALLERY

Foothills and Hospitality Pvt Ltd
(Drywall Sandwich panel for Farm House)





PROJECT GALLERY

Kumar Properties, Pune (PE Inspection Chamber)





PROJECT GALLERY

Shirdi International Airport, Shirdi (Self Standing wall)





INFINI

Engineers & Contractors

Office No.1, Rasik apartment, Near Dashbhuja Ganpati Mandir,
Paud Road, Erandwane, Pune - 411 004



info@infiniengineers.com
infiniengineers@gmail.com



82752801875
9970062049

www.infiniengineers.com